



MM / MC
PHONO STAGE | m1VINYL

MUSICAL FIDELITY

POWER/STBY

MM

MM-B

MM-C

MC

MC-B

BIA/VE

CAUTION

MOUNT UNIT ON SOLID SURFACE.
DO NOT REMOVE SCREWS OR COVERS
UNDER ANY CIRCUMSTANCES.
NO USER SERVICEABLE COMPONENTS INSIDE.
REFER SERVICING TO QUALIFIED ENGINEER.
SEE OWNERS MANUAL FOR FURTHER INFORMATION.

m1VINL

MM/MC PHONO STAGE
by MUSICAL FIDELITY

DESIGNED IN ENGLAND BUILT IN TAIWAN



MM INPUTS MC



XLR BALANCED OUTPUT

RIGHT



SINGLE ENDED OUTPUT

L



XLR BALANCED OUTPUT

LEFT



TRIGGER



INPUT VOLTAGE
90-250V

50/60Hz

THIS APPLIANCE
MUST BE
EARTHED

IMPORTANT

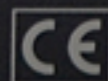


POWER CONSUMPTION 10W

DATE OF
MANUFACTURE

AUG 2011

SERIAL
NUMBER

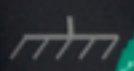


CAUTION

MOUNT UNIT ON SOLID SURFACE.
DO NOT REMOVE SCREWS OR COVERS
UNDER ANY CIRCUMSTANCES.
NO USER SERVICEABLE COMPONENTS INSIDE.
REFER SERVICING TO QUALIFIED ENGINEER.
SEE OWNERS MANUAL FOR FURTHER INFORMATION.

m1VINL
MM/MC PHONO STAGE
by MUSICAL FIDELITY

DESIGNED IN ENGLAND BUILT IN TAIWAN



MM MC



XLR BALANCED
OUTPUT

SINGLE ENDED
OUTPUT

XLR BALANCED
OUTPUT

TRIGGER



INPUT
VOLTAGE
90-250V
~ 50/60Hz

THIS APPLIANCE
MUST BE
EARTHED
IMPORTANT

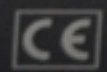
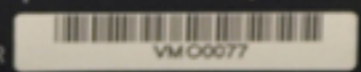


POWER CONSUMPTION 10W

DATE OF
MANUFACTURE

AUG 2011

SERIAL
NUMBER



MM / MC
PHONO STAGE | **m1**vinyl

by MUSICAL FIDELITY

POWER/STBY

MM

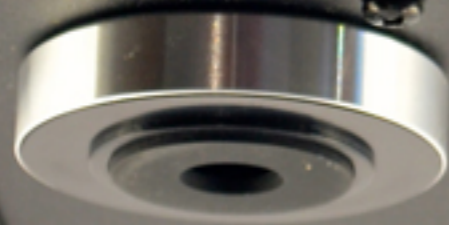
MM-R

MM-C

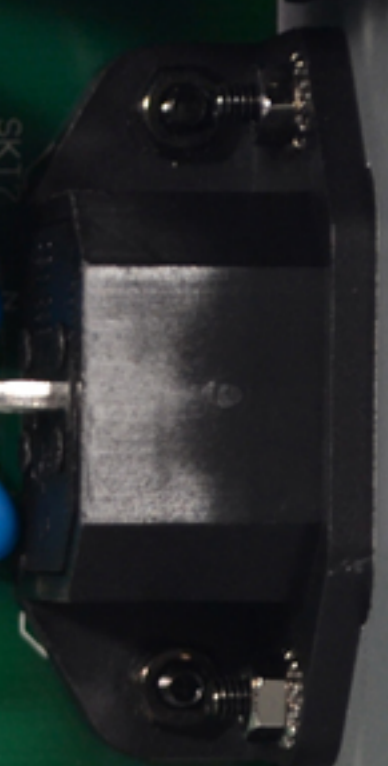
MC

MC-R

RIAA/IEC







CHASSIS EARTH!

TRIGGER OUT

TRIGGER IN

SKT6 SKT5

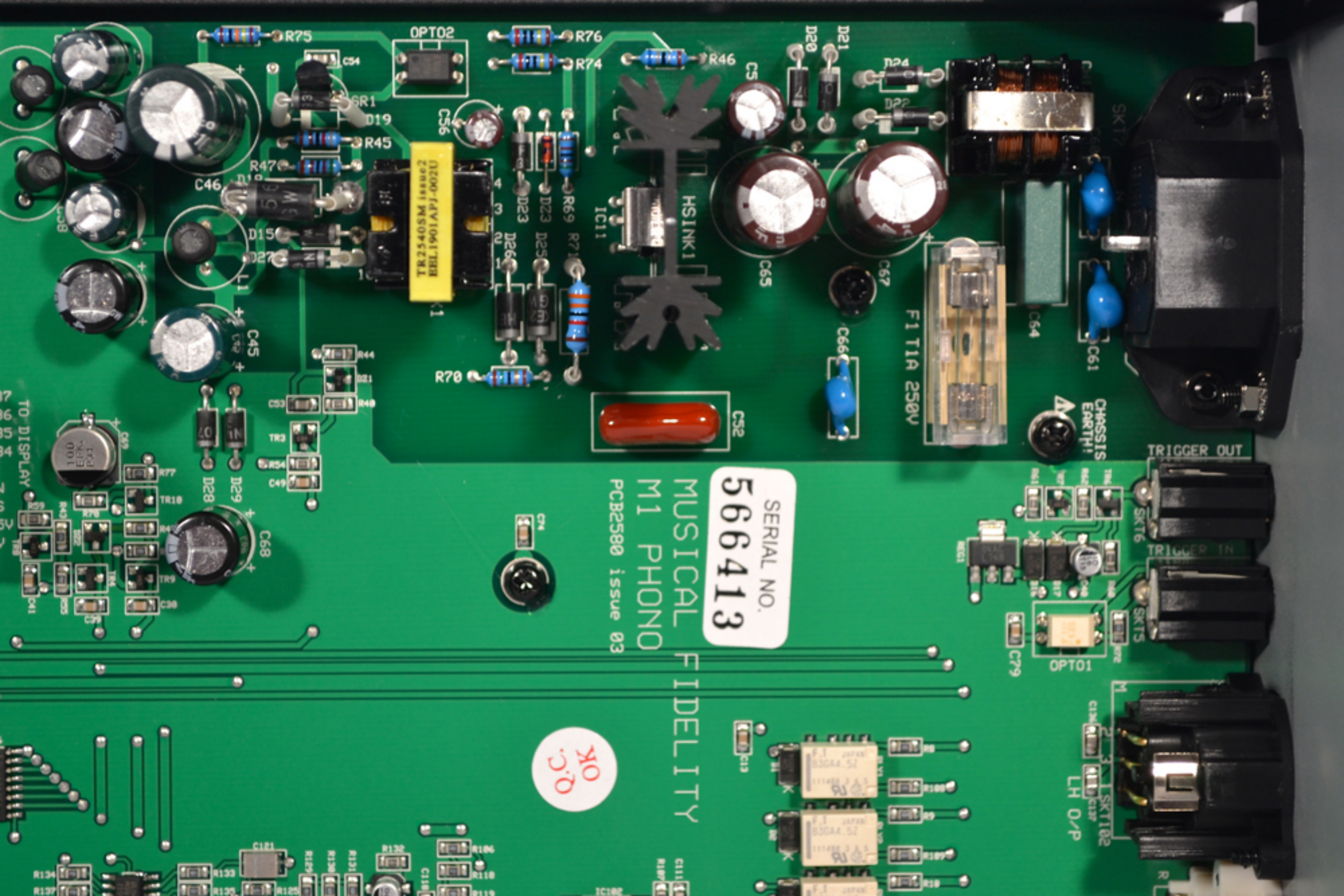
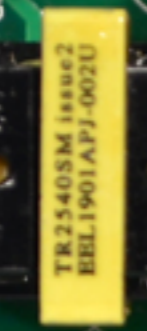
SKT102 SKT103 LH O/P

F1T1A 250V

SERIAL NO.
566413

MUSICAL FIDELITY
M1 PHONO
PCB2580 issue 03

100
0.0



M1 Vinl V1.1

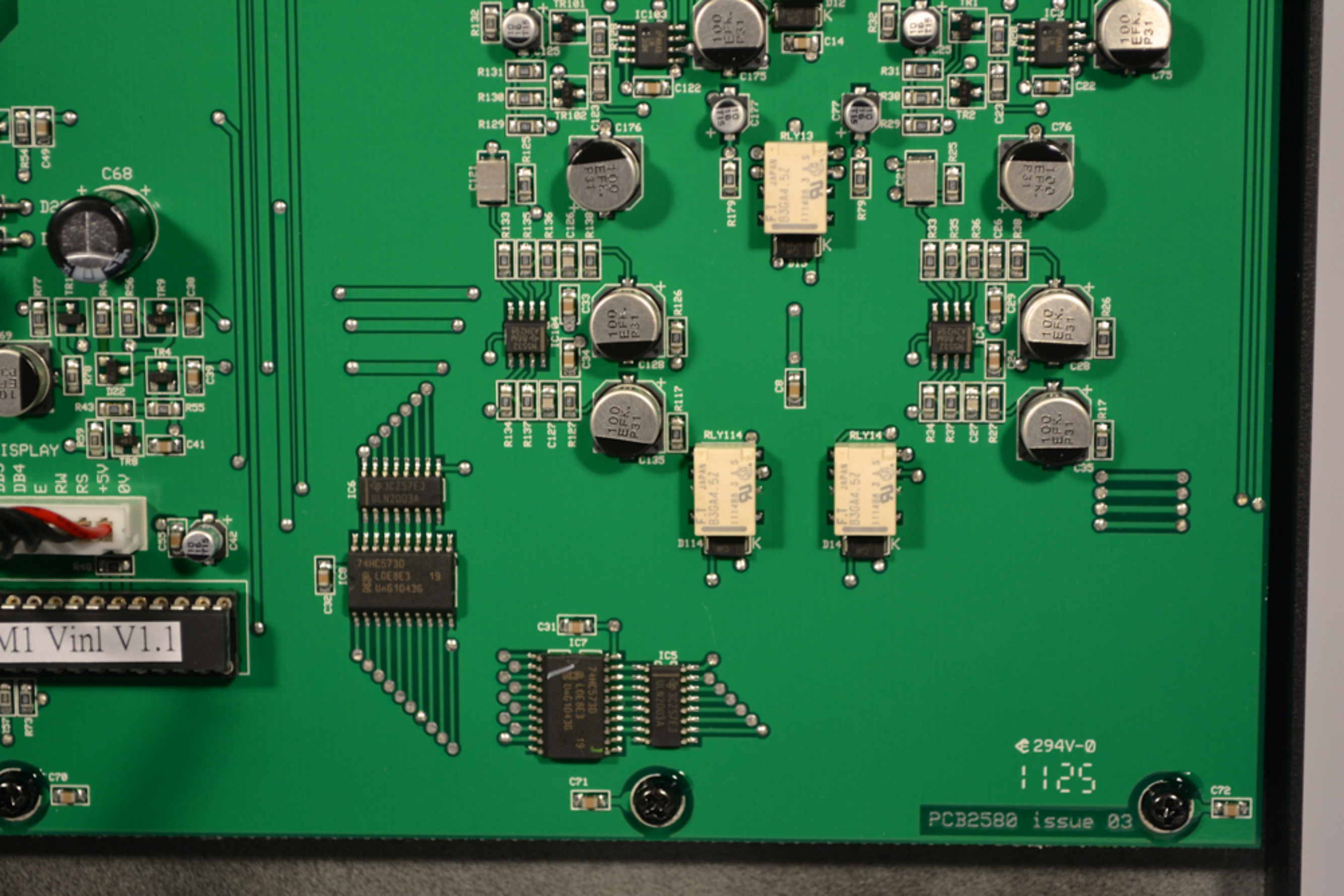
DISPLAY
DB4
E RW
RS
+5V
0V

IC6
3CZ57E3
ULN2003A
74HC573D
LDE8E3 19
UAG1043G

IC7
74VHC573
C30307
0E2520VZ
IC8
V0002N70
C305220
0E2520VZ

294V-0
1125

PCB2580 issue 03



OPT

R1

D19

R47

R44

D21

R49

C54

R75

C46

D1

D15

D27

L1

C45

D29

D28

C68

C58

L3

L2

C3

C69

TR3

TR4

TR9

C38

TR8

R77

TR18

R4

R5

R43

R78

D22

R35

C39

R40

R39

R38

R37

R36

R35

R34

R33

R32

R31

R30

R29

R28

R27

R26

R25

R24

R23

R22

R21

R20

R19

R18

R17

R16

R15

R14

R13

R12

R11

R10

R9

R8

R7

R6

R5

R4

R3

R2

R1

C53

C52

C51

C50

C49

C48

C47

C46

C45

C44

C43

C42

C41

C40

C39

C38

C37

C36

C35

C34

C33

C32

C31

C30

C29

C28

C27

C26

C25

C24

C23

C22

C21

C20

C19

C18

C17

C16

C15

C14

C13

C12

C11

C10

C9

C8

C7

C6

C5

C4

C3

C2

C1

TO DISPLAY

DB7

DB6

DB5

DB4

E

RW

RS

+5V

0V

SK1

IC10

M1 Vinl V1.1

IC6

74HC573D

LOE8E3

UoG10436

IC8

3C25763

HLN2003A

IC7

74HC573D

LOE8E3

UoG10436

IC5

74HC573D

LOE8E3

UoG10436

IC103

74HC573D

LOE8E3

UoG10436

IC102

74HC573D

LOE8E3

UoG10436

IC101

74HC573D

LOE8E3

UoG10436

SK

TO PUSH BUTTON

C78

C79

C71

D114

IC104

74HC573D

LOE8E3

UoG10436

R126

R117

R116

R115

R114

R113

R112

R111

R110

R109

R108

R107

R106

R105

R104

R103

R102

R101

R100

R99

R98

R97

R96

R95

R94

R93

R92

R91

R90

R89

R88

R87

R86

R85

R84

R83

R82

R81

R80

R79

R78

R77

R76

R75

R74

R73

R72

R71

R70

R69

R68

R67

R66

R65

R64

R63

R62

R61

R60

R59

R58

R57

R56

R55

R54

R53

R52

R51

R50

R49

R48

R47

R46

R45

R44

R43

R42

R41

R40

R39

R38

R37

R36

R35

R34

R33

R32

R31

R30

R29

R28

R27

R26

R25

R24

R23

R22

R21

R20

R19

R18

R17

R16

R15

R14

R13

R12

R11

R10

R9

R8

R7

R6

R5

R4

R3

R2

R1

IDEALITY



IC5
IC6

C1
IC7
IC8

R134, R137, R127, C127, R133, R125, R136, R138, C124, C123, R129, R128, R131, R130, R132, R106, R110, R119, R120, R121, R122, R123, C118, C119, C116, C117, R114, R115, R112, R113, R111, R110, R109, R108, R107, R106, R105, R104, R103, R102, R101, R100, R99, R98, R97, R96, R95, R94, R93, R92, R91, R90, R89, R88, R87, R86, R85, R84, R83, R82, R81, R80, R79, R78, R77, R76, R75, R74, R73, R72, R71, R70, R69, R68, R67, R66, R65, R64, R63, R62, R61, R60, R59, R58, R57, R56, R55, R54, R53, R52, R51, R50, R49, R48, R47, R46, R45, R44, R43, R42, R41, R40, R39, R38, R37, R36, R35, R34, R33, R32, R31, R30, R29, R28, R27, R26, R25, R24, R23, R22, R21, R20, R19, R18, R17, R16, R15, R14, R13, R12, R11, R10, R9, R8, R7, R6, R5, R4, R3, R2, R1, R0

C121, C120, C118, C119, C116, C117, C114, C115, C112, C113, C111, C110, C109, C108, C107, C106, C105, C104, C103, C102, C101, C100, C99, C98, C97, C96, C95, C94, C93, C92, C91, C90, C89, C88, C87, C86, C85, C84, C83, C82, C81, C80, C79, C78, C77, C76, C75, C74, C73, C72, C71, C70, C69, C68, C67, C66, C65, C64, C63, C62, C61, C60, C59, C58, C57, C56, C55, C54, C53, C52, C51, C50, C49, C48, C47, C46, C45, C44, C43, C42, C41, C40, C39, C38, C37, C36, C35, C34, C33, C32, C31, C30, C29, C28, C27, C26, C25, C24, C23, C22, C21, C20, C19, C18, C17, C16, C15, C14, C13, C12, C11, C10, C9, C8, C7, C6, C5, C4, C3, C2, C1, C0

R179, R178, R177, R176, R175, R174, R173, R172, R171, R170, R169, R168, R167, R166, R165, R164, R163, R162, R161, R160, R159, R158, R157, R156, R155, R154, R153, R152, R151, R150, R149, R148, R147, R146, R145, R144, R143, R142, R141, R140, R139, R138, R137, R136, R135, R134, R133, R132, R131, R130, R129, R128, R127, R126, R125, R124, R123, R122, R121, R120, R119, R118, R117, R116, R115, R114, R113, R112, R111, R110, R109, R108, R107, R106, R105, R104, R103, R102, R101, R100, R99, R98, R97, R96, R95, R94, R93, R92, R91, R90, R89, R88, R87, R86, R85, R84, R83, R82, R81, R80, R79, R78, R77, R76, R75, R74, R73, R72, R71, R70, R69, R68, R67, R66, R65, R64, R63, R62, R61, R60, R59, R58, R57, R56, R55, R54, R53, R52, R51, R50, R49, R48, R47, R46, R45, R44, R43, R42, R41, R40, R39, R38, R37, R36, R35, R34, R33, R32, R31, R30, R29, R28, R27, R26, R25, R24, R23, R22, R21, R20, R19, R18, R17, R16, R15, R14, R13, R12, R11, R10, R9, R8, R7, R6, R5, R4, R3, R2, R1, R0

C179, C178, C177, C176, C175, C174, C173, C172, C171, C170, C169, C168, C167, C166, C165, C164, C163, C162, C161, C160, C159, C158, C157, C156, C155, C154, C153, C152, C151, C150, C149, C148, C147, C146, C145, C144, C143, C142, C141, C140, C139, C138, C137, C136, C135, C134, C133, C132, C131, C130, C129, C128, C127, C126, C125, C124, C123, C122, C121, C120, C119, C118, C117, C116, C115, C114, C113, C112, C111, C110, C109, C108, C107, C106, C105, C104, C103, C102, C101, C100, C99, C98, C97, C96, C95, C94, C93, C92, C91, C90, C89, C88, C87, C86, C85, C84, C83, C82, C81, C80, C79, C78, C77, C76, C75, C74, C73, C72, C71, C70, C69, C68, C67, C66, C65, C64, C63, C62, C61, C60, C59, C58, C57, C56, C55, C54, C53, C52, C51, C50, C49, C48, C47, C46, C45, C44, C43, C42, C41, C40, C39, C38, C37, C36, C35, C34, C33, C32, C31, C30, C29, C28, C27, C26, C25, C24, C23, C22, C21, C20, C19, C18, C17, C16, C15, C14, C13, C12, C11, C10, C9, C8, C7, C6, C5, C4, C3, C2, C1, C0

IC102
IC101
IC100
IC99
IC98
IC97
IC96
IC95
IC94
IC93
IC92
IC91
IC90

PCB2580 Issue 03
← 294V-0
1125
C72

FIDELITY

O.C. OK

LH O/P

RH O/P

MOVING COIL
CARTRIDGE INPUT

MOVING MAGNET
CARTRIDGE INPUT

IC101
IC102
IC103
IC104
IC105
IC106
IC107
IC108
IC109
IC110
IC111
IC112
IC113
IC114
IC115
IC116
IC117
IC118
IC119
IC120
IC121
IC122
IC123
IC124
IC125
IC126
IC127
IC128
IC129
IC130
IC131
IC132
IC133
IC134
IC135
IC136
IC137
IC138
IC139
IC140
IC141
IC142
IC143
IC144
IC145
IC146
IC147
IC148
IC149
IC150
IC151
IC152
IC153
IC154
IC155
IC156
IC157
IC158
IC159
IC160
IC161
IC162
IC163
IC164
IC165
IC166
IC167
IC168
IC169
IC170
IC171
IC172
IC173
IC174
IC175
IC176
IC177
IC178
IC179
IC180
IC181
IC182
IC183
IC184
IC185
IC186
IC187
IC188
IC189
IC190
IC191
IC192
IC193
IC194
IC195
IC196
IC197
IC198
IC199
IC200

100 EFK. P31
100 EFK. P31

100 EFK. P31

100 EFK. P31

100 EFK. P31

100 EFK. P31

100 EFK. P31

100 EFK. P31

100 EFK. P31

SKT102
SKT101
SKT1

SKT2
SKT3

SKT4

SKT5

C79 OPT01

C88 C89 C90

C73

R106 R118 R119 R120 R121 R122 R123 R124 R125 R126 R127 R128 R129 R130 R131 R132 R133 R134 R135 R136 R137 R138 R139 R140 R141 R142 R143 R144 R145 R146 R147 R148 R149 R150 R151 R152 R153 R154 R155 R156 R157 R158 R159 R160 R161 R162 R163 R164 R165 R166 R167 R168 R169 R170 R171 R172 R173 R174 R175 R176 R177 R178 R179 R180 R181 R182 R183 R184 R185 R186 R187 R188 R189 R190 R191 R192 R193 R194 R195 R196 R197 R198 R199 R200 R201 R202 R203 R204 R205 R206 R207 R208 R209 R210 R211 R212 R213 R214 R215 R216 R217 R218 R219 R220 R221 R222 R223 R224 R225 R226 R227 R228 R229 R230 R231 R232 R233 R234 R235 R236 R237 R238 R239 R240 R241 R242 R243 R244 R245 R246 R247 R248 R249 R250 R251 R252 R253 R254 R255 R256 R257 R258 R259 R260 R261 R262 R263 R264 R265 R266 R267 R268 R269 R270 R271 R272 R273 R274 R275 R276 R277 R278 R279 R280 R281 R282 R283 R284 R285 R286 R287 R288 R289 R290 R291 R292 R293 R294 R295 R296 R297 R298 R299 R300

C101 C102 C103 C104 C105 C106 C107 C108 C109 C110 C111 C112 C113 C114 C115 C116 C117 C118 C119 C120 C121 C122 C123 C124 C125 C126 C127 C128 C129 C130 C131 C132 C133 C134 C135 C136 C137 C138 C139 C140 C141 C142 C143 C144 C145 C146 C147 C148 C149 C150 C151 C152 C153 C154 C155 C156 C157 C158 C159 C160 C161 C162 C163 C164 C165 C166 C167 C168 C169 C170 C171 C172 C173 C174 C175 C176 C177 C178 C179 C180 C181 C182 C183 C184 C185 C186 C187 C188 C189 C190 C191 C192 C193 C194 C195 C196 C197 C198 C199 C200 C201 C202 C203 C204 C205 C206 C207 C208 C209 C210 C211 C212 C213 C214 C215 C216 C217 C218 C219 C220 C221 C222 C223 C224 C225 C226 C227 C228 C229 C230 C231 C232 C233 C234 C235 C236 C237 C238 C239 C240 C241 C242 C243 C244 C245 C246 C247 C248 C249 C250 C251 C252 C253 C254 C255 C256 C257 C258 C259 C260 C261 C262 C263 C264 C265 C266 C267 C268 C269 C270 C271 C272 C273 C274 C275 C276 C277 C278 C279 C280 C281 C282 C283 C284 C285 C286 C287 C288 C289 C290 C291 C292 C293 C294 C295 C296 C297 C298 C299 C300

